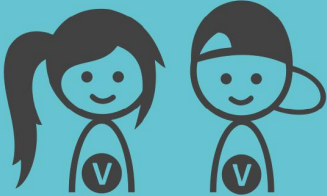




EFFATHA

Socio-therapeutic workshop



Term project

1st September
– 31st August

Address

Hlubčická 294/9
794 01 Krnov



Target group

Adults from 18 years
of age with mental
and multiple disabilities

Activities

EFFATHA socio-therapeutic workshops focus on work with adults with mental and multiple disabilities in such a way as to allow them to gain and maintain work habits and skills. EFFATHA gives its users an opportunity to spend their time in an active and enjoyable way while learning new things, meeting new people and gaining interesting experience. In the workshops, EFFATHA service users and staff produce many interesting things such as small gift items, decorative items, ceramics, and others. Your main task will be to provide individual and personal support to people using EFFATHA'S services. You will support and assist them during various therapeutic workshops for instance: pottery, creative workshop, textile workshop, and others. Accompanying and assisting users during various activities and events such as: cooking, gardening, trips, memory trainings, relaxation activities and others. You will also assist in preparing materials and workspace, and scheduling of the work of service users. You will cooperate with social workers. You will also have an opportunity to make your own mini project.



Challenges

The main challenge is communication with people with mental disabilities and the fact that most workers do not know a foreign language. Be prepared for that for the first few weeks you will have to communicate with your feet and hands. Mainly you will work personally with one or a small group of users.



Your profile

You should be a positive and active person with interest in helping others. If you are creative and you like a handcraft it is a plus for you and us.





EUNIKA Karviná

Day Care Centre, Counselling,
Social-activation services for
people with disabilities



Term project

1st September
– 31st August



Address

Kašparova 2978/1
733 01 Karviná - Hranice



Target group

Children and adults with
mental, physical disabilities
Children and adults with
combined disabilities
Children and adults with
autism

Activities

You will support and assist service users using EUNIKA's services. This means you will accompany them during experiential therapies such as therapy with horses and canine therapy. You will assist service users during practical activities such as help at mealtimes taking walks and movement around the centre. EUNIKA provides many forms of exercise users can participate in like leisure exercises, activation of motor skills and ergotherapy. You will take part in activities such as the drama hour and music hour. You will also accompany and assist users to participate in various events outside the centre. You will assist during relaxation and in the quiet room. You will cooperate with social workers and workers in social services. You can also accompany counsellors when they visit families, where you will work with the children, for example with activation activities, playing games and educational development. There will be an opportunity to make your own mini-project.



Challenges

You will probably have to overcome various prejudices and be prepared individual work with the service users. In this centre you will work with a difficult target group (children and adults with different types of disability), you need to be open, physically and mentally resilient and proactive. You will have to overcome the language barrier and learn new ways how to communicate and create a relationship with service users.



Your profile

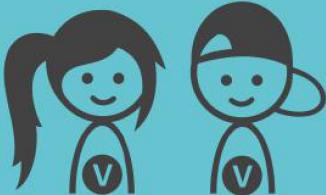
The volunteer should be able to work with people with disabilities (mental, physical, combine and autistic). You should be creative, responsible and empathic. You should be a person who loves to work with adults and children and knows how to attract a child's attention. You shouldn't be afraid of working in activities outside the centre and also with a family with a child with disabilities.





Low-threshold centre in Město Albrechtice

Low-threshold centre



Term project

1st September
– 31st August



Address

Lázeňská 119/2, 739 95 Město Albrechtice
Holčovice 8, 793 91 Holčovice
Jindřichov 191, 793 83 Jindřichov
Vysoká 34, 793 99 Vysoká



Target group

Children and youth
living in or threatened
by unfavourable social
conditions
(ages from 6 to 20 years)

Activities

The low-threshold centre for children and youth in the region of Město Albrechtice offers after school activities for children and youth aged 6 – 20. The service tries to achieve positive changes in the lives of children and youth, provide information, professional assistance and support in difficult life situations, as well as conditions for establishing new contacts, thus preventing the children and youth from being socially excluded. The objective of the service is to guide children and young people through the period of their adolescence, showing them alternative solutions for their situation and alternative leisure time activities, thus creating suitable conditions for their healthy development and personal growth. You will participate in the usual activities offered by the centre (for example table football, board games, conversations). Your task will be the preparation and implementation of group activities for service users. Presentation of various features of volunteer's native country (cuisine, education system, institutions, leisure time activities, plays and games typical for the country, etc.) will also play a part. Teaching a foreign language (English or the volunteer's native language) in an entertaining manner would be welcome. Tidying-up with service users is expected. The volunteer will prepare a mini project according to their interests.



Challenges

At our service, we are never able to tell how many clients on the given day will come. This means that there may be 18 clients or only 2. This may complicate the volunteer's work. Especially if they prepare an activity for more users and then have to actively respond to fewer clients. Another problem is that 90% of users don't speak English. If the volunteer doesn't want to learn Czech language, work will be more complicated. A problem for the volunteer may also mean commuting to work (about 20 minutes by bus). Sometimes the work may seem monotonous.



Your profile

You should be open to work with the target group of teenagers and young adults and be pro-active, being able to apply some of your own skills. We will greatly appreciate it if a volunteer can play some of the musical instruments. We also need the ability to communicate and for the volunteer not to be too shy to talk. You should be able to learn Czech language fast. Creativity, art talent (drawing, cutting, gluing, manufacturing), working with a PC (at least Word and Power Point) are also appropriate.

